

**0.200" PITCH  
PCB1A SERIES**

**PHYSICAL PROPERTIES**

**Housing**

HOUSING MATERIAL: Polyester  
 FLAMMABILITY: UL94V-0  
 COLOR: White

**Terminal**

TUBULAR CONTACT: Brass  
 PC CONTACT: Phosphor Bronze with Bright Tin or Gold over Nickel plating  
 SCREW: Steel with Zinc + Chromate plating  
 CLAMP: Brass

**Mechanical**

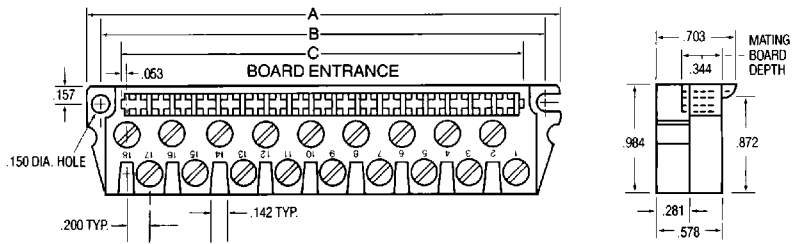
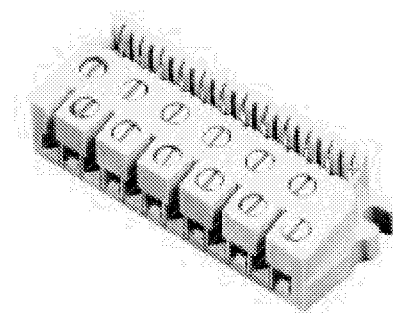
PITCH (TERMINAL SPACING): .200"  
 SCREW SIZE: 6-32  
 MOUNTING SCREW SIZE: #4 or #6  
 WIRE STRIP LENGTH: .25"  
 RECOMMENDED TIGHTENING TORQUE: 5-8 in-lbs.  
 RECOMMENDED SCREWDRIVERS: Xcelite R184, Sears Craftsman 41429, Stanley 1016  
 BOARD INSERTION FORCE (TYP.) PER CKT.: 5.6 oz. (160g)  
 BOARD SEPARATION FORCE (TYP.) PER CKT.: 1.8 oz. (50g)  
 DURABILITY: Passes MIL-C-21097: 500 cycles

**ELECTRICAL PROPERTIES**

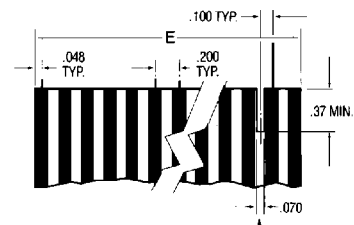
MAXIMUM CURRENT: 10A  
 OPERATING VOLTAGE: 250V  
 WIRE RANGE: #12 Stranded Only  
 DIELECTRIC WITHSTAND: 2500V  
 INSULATION RESISTANCE: 10<sup>11</sup> ohms  
 CONTACT RESISTANCE: 6 milliohms

**ENVIRONMENTAL PROPERTIES**

OPERATING TEMPERATURE RANGE:  
 -65°C to +140°C  
 (-85°F to +284°F)



**Recommended PC Board Layout**



POLARIZING KEY NOTCH  
 Location in PC board per customer requirement.  
 Order Polarizing Key Catalog No. PC17.

**Ordering Information**

CATALOG #	NO. OF CIRCUITS	DIMENSIONS A	DIMENSIONS B	DIMENSIONS C	DIMENSIONS E
PCB1A12S	12	2.920	2.670	2.310	2.295
PCB1A18S	18	4.120	3.870	3.510	3.495
PCB1A24S	24	5.320	5.070	4.710	4.695
PCB1A30S	30	6.520	6.270	5.910	5.895
PCB1A36S	36	7.720	7.470	7.110	7.095

\*NOTE: For Optional Gold-Over-Nickel Plating On Contacts (Instead Of Standard Bright Tin) Change The Letter "S" Of The Catalog Number To "A".



**0.156" PITCH  
PCB1B SERIES**

**PHYSICAL PROPERTIES**

**Housing**

HOUSING MATERIAL: Polyester  
FLAMMABILITY: UL94V-0  
COLOR: Black

**Terminal**

TUBULAR CONTACT: Brass  
PC CONTACT: Phosphor Bronze with Bright Tin or Gold over Nickel plating  
SCREW: Steel with Zinc + Chromate plating  
CLAMP: Brass

**Mechanical**

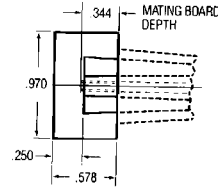
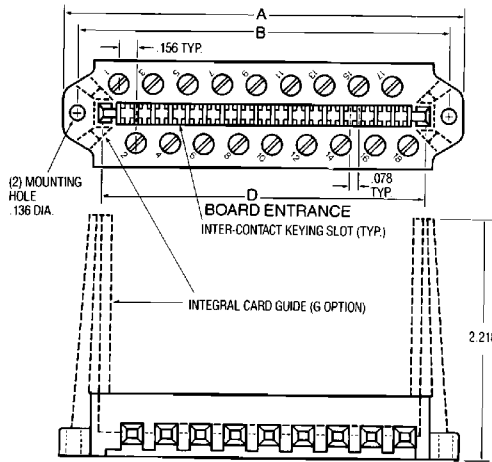
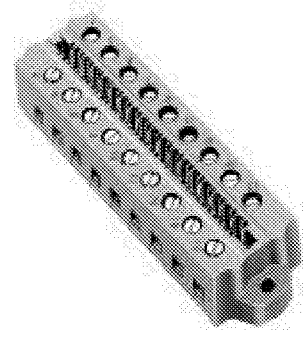
PITCH (TERMINAL SPACING): .156"  
SCREW SIZE: 6-32  
MOUNTING SCREW SIZE: #4 or #6  
WIRE RANGE: #12 Stranded Only  
WIRE STRIP LENGTH: .25"  
RECOMMENDED TIGHTENING TORQUE: 5-8 in.-lbs.  
RECOMMENDED SCREWDRIVERS: Xcelite R184, Sears Craftsman 41429, Stanley 1016  
BOARD INSERTION FORCE (TYP.) PER CKT.: 5.6 oz. (160g)  
BOARD SEPARATION FORCE (TYP.) PER CKT.: 1.8 oz. (50g)  
DURABILITY: Passes MIL-C-21097: 500 cycles

**ELECTRICAL PROPERTIES**

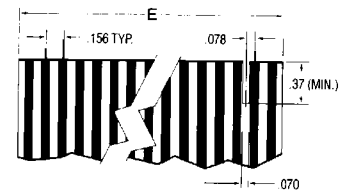
MAXIMUM CURRENT: 10A  
OPERATING VOLTAGE: 250V  
WIRE RANGE: #12 Stranded Only  
DIELECTRIC WITHSTAND: 3000V  
INSULATION RESISTANCE: 10<sup>11</sup> ohms  
CONTACT RESISTANCE: 6 milliohms

**ENVIRONMENTAL PROPERTIES**

OPERATING TEMPERATURE RANGE:  
-65°C to +140°C  
(-85°F to +284°F)



**Recommended PC Board Layout**



POLARIZING KEY NOTCH  
Location in PC board per customer requirement.  
Order Polarizing Key Catalog No. PC17.

**Ordering Information**

CATALOG #	NO. OF CIRCUITS	A	B	C	E
PCB1B06S	06	1.786	1.536	1.100	1.085
PCB1B08S	08	2.098	1.848	1.412	1.397
PCB1B10S	10	2.410	2.160	1.724	1.709
PCB1B12S	12	2.722	2.472	2.036	2.021
PCB1B15S	15	3.190	2.940	2.504	2.489
PCB1B16S	16	3.346	3.096	2.660	2.645
PCB1B18S	18	3.658	3.408	2.972	2.957
PCB1B22S	22	4.282	4.032	3.596	3.581
PCB1B24S	24	4.600	4.344	3.908	3.893
PCB1B28S	28	5.218	4.968	4.544	4.829
PCB1B30S	30	5.530	5.280	4.844	4.829
PCB1B32S	32	5.842	5.592	5.156	5.141
PCB1B36S	36	6.466	6.216	5.780	5.765
PCB1B43S	43	7.558	7.308	6.872	6.857

\*NOTE: For optional Gold-over-Nickel plating on contacts (instead of standard bright tin), change the letter "S" of the catalog number to "A."  
For optional integral card guides, add the letter "G" to the end of the catalog number.



**0.156" PITCH  
PCB2B SERIES**

**PHYSICAL PROPERTIES**

**Housing**

HOUSING MATERIAL: Polyester  
FLAMMABILITY: UL94V-0  
COLOR: Black

**Terminal**

TUBULAR CONTACT: Brass  
PC CONTACT: Phosphor Bronze with Bright Tin or Gold over Nickel plating  
SCREW: Steel with Zinc + Chromate plating  
CLAMP: Brass

**Mechanical**

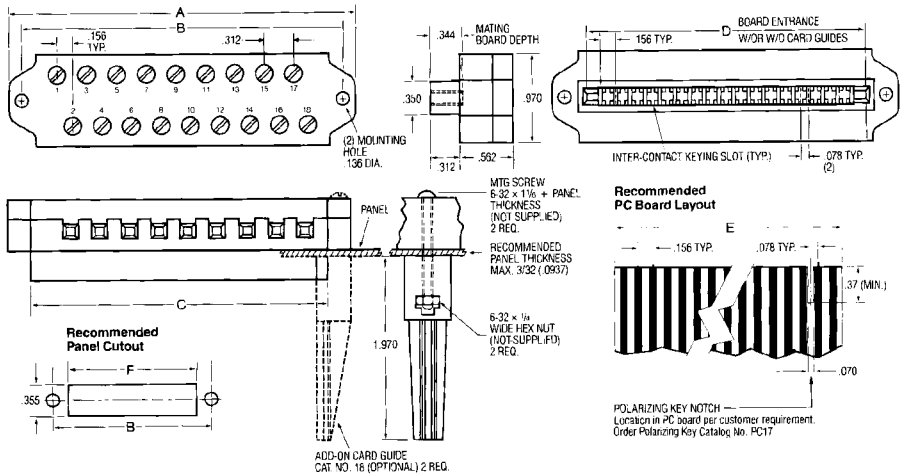
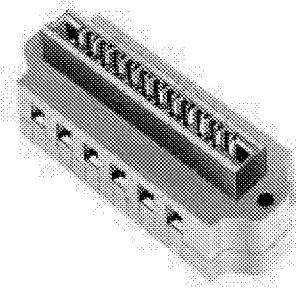
PITCH (TERMINAL SPACING): .156"  
SCREW SIZE: 6-32  
MOUNTING SCREW SIZE: #4 or #6  
WIRE STRIP LENGTH: .25"  
RECOMMENDED TIGHTENING TORQUE: 5-8 in-lbs.  
RECOMMENDED SCREWDRIVERS: Xcelite R184, Sears Craftsman 41429, Stanley 1016  
BOARD INSERTION FORCE (TYP.) PER CKT.: 5.6 oz. (160g)  
BOARD SEPARATION FORCE (TYP.) PER CKT.: 1.8 oz. (50g)  
DURABILITY: Passes MIL-C-21097: 500 cycles

**ELECTRICAL PROPERTIES**

MAXIMUM CURRENT: 10A  
OPERATING VOLTAGE: 250V  
WIRE RANGE: #12 Stranded Only  
DIELECTRIC WITHSTAND: 3000V  
INSULATION RESISTANCE: 10<sup>11</sup> ohms  
CONTACT RESISTANCE: 6 milliohms

**ENVIRONMENTAL PROPERTIES**

OPERATING TEMPERATURE RANGE:  
-65°C to +140°C  
(-85°F to +284°F)



**Ordering Information**

CATALOG #	NO. OF CIRCUITS	A	B	C	D	E	F(MIN.)
PCB2B06S	06	1.786	1.536	1.264	1.100	1.085	1.284
PCB2B08S	08	2.098	1.848	1.576	1.412	1.397	1.596
PCB2B09S	09	2.254	2.004	1.732	1.568	1.553	1.752
PCB2B10S	10	2.410	2.160	1.888	1.724	1.709	1.908
PCB2B12S	12	2.722	2.472	2.200	2.036	2.021	2.220
PCB2B15S	15	3.190	2.940	2.668	2.504	2.489	2.688
PCB2B16S	16	3.346	3.096	2.824	2.660	2.645	2.844
PCB2B18S	18	3.658	3.408	3.136	2.972	2.957	3.156
PCB2B22S	22	4.282	4.032	3.760	3.596	3.581	3.780
PCB2B24S	24	4.594	4.344	4.072	3.908	3.893	4.092
PCB2B28S	28	5.218	4.968	4.696	4.532	4.517	4.716
PCB2B30S	30	5.530	5.280	5.008	4.844	4.829	5.028
PCB2B32S	32	5.842	5.592	5.320	5.156	5.141	5.340
PCB2B36S	36	6.466	6.216	5.944	5.780	5.765	5.964
PCB2B43S	43	7.558	7.308	7.036	6.872	6.857	7.056

\*NOTE: For optional Gold-over-Nickel plating on contacts (instead of standard bright tin), change the letter "S" of the catalog number to "A."



**0.200" PITCH  
PCB3A SERIES**

**PHYSICAL PROPERTIES**

**Housing**

HOUSING MATERIAL: Polyester  
FLAMMABILITY: UL94V-0  
COLOR: Black

**Terminal**

TUBULAR CONTACT: Brass  
PC CONTACT: Phosphor Bronze with Bright Tin or Gold over Nickel plating  
SCREW: Steel with Zinc + Chromate plating  
CLAMP: Brass

**Mechanical**

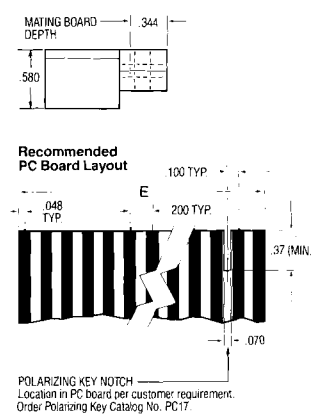
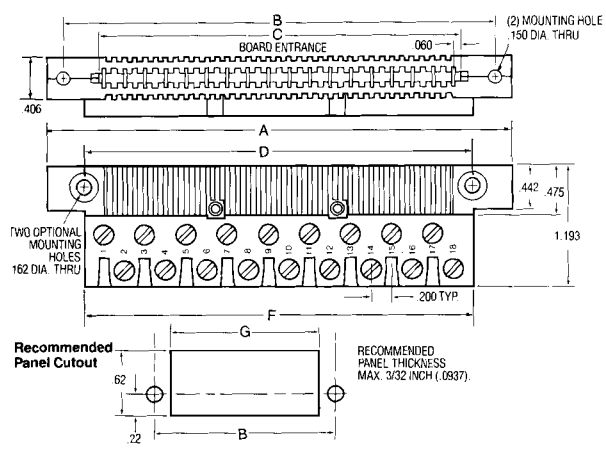
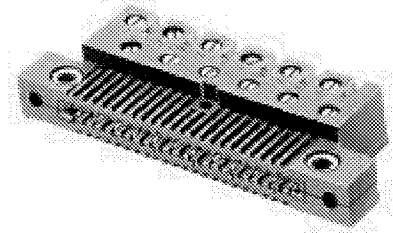
PITCH (TERMINAL SPACING): .200"  
SCREW SIZE: 6-32  
MOUNTING SCREW SIZE: #6  
WIRE STRIP LENGTH: .25"  
RECOMMENDED TIGHTENING TORQUE: 5-8 in-lbs.  
RECOMMENDED SCREWDRIVERS: Xcelite R184, Sears Craftsman 41429, Stanley 1016  
BOARD INSERTION FORCE (TYP.) PER CKT.: 5.6 oz. (160g)  
BOARD SEPARATION FORCE (TYP.) PER CKT.: 1.8 oz. (50g)  
DURABILITY: Passes MIL-C-21097: 500 cycles

**ELECTRICAL PROPERTIES**

MAXIMUM CURRENT: 10A  
OPERATING VOLTAGE: 250V  
WIRE RANGE: #12 Stranded Only  
DIELECTRIC WITHSTAND: 2500V  
INSULATION RESISTANCE: 10<sup>11</sup> ohms  
CONTACT RESISTANCE: 6 milliohms

**ENVIRONMENTAL PROPERTIES**

OPERATING TEMPERATURE RANGE:  
-65°C to +140°C  
(-85°F to +284°F)



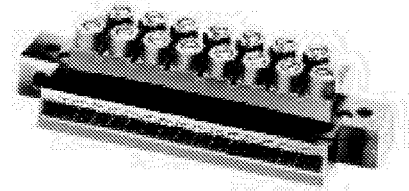
**Ordering Information**

CATALOG #	NO OF CIRCUITS	A	B	C	DSF	E	G
PCB3A06S	06	2.150	1.800	1.120	1.400	1.105	1.43
PCB3A08S	08	2.550	2.200	1.520	1.800	1.505	1.83
PCB3A10S	10	2.950	2.600	1.920	2.200	1.905	2.23
PCB3A12S	12	3.350	3.000	2.320	2.600	2.305	2.63
PCB3A15S	15	3.950	3.600	2.920	3.200	2.905	3.23
PCB3A16S	16	4.150	3.800	3.120	3.400	3.105	3.43
PCB3A18S	18	4.550	4.200	3.520	3.800	3.505	3.83
PCB3A20S	20	4.950	4.600	3.920	4.200	3.905	4.23
PCB3A22S	22	5.350	5.000	4.320	4.600	4.305	4.63
PCB3A24S	24	5.750	5.400	4.720	5.000	4.705	5.03
PCB3A30S	30	6.950	6.600	5.920	6.200	5.905	6.23
PCB3A32S	32	7.350	7.000	6.320	6.600	6.305	6.63
PCB3A34S	34	7.750	7.400	6.720	7.000	6.705	7.03
PCB3A36S	36	8.150	7.800	7.120	7.400	7.105	7.43
PCB3A44S	44	9.750	9.400	8.720	9.000	8.705	9.03

\*NOTE: For optional Gold-over-Nickel plating on contacts (instead of standard bright tin), change the letter "S" of the catalog number to "A."



**0.156" PITCH  
PCB3S SERIES**



**PHYSICAL PROPERTIES**

**Housing**

HOUSING MATERIAL: Polyester  
 FLAMMABILITY: UL94V-0  
 COLOR: Black

**Terminal**

TUBULAR CONTACT: Brass  
 PC CONTACT: Phosphor Bronze with Bright Tin or Gold over Nickel plating  
 SCREW: Steel with Zinc + Chromate plating  
 CLAMP: Brass

**Mechanical**

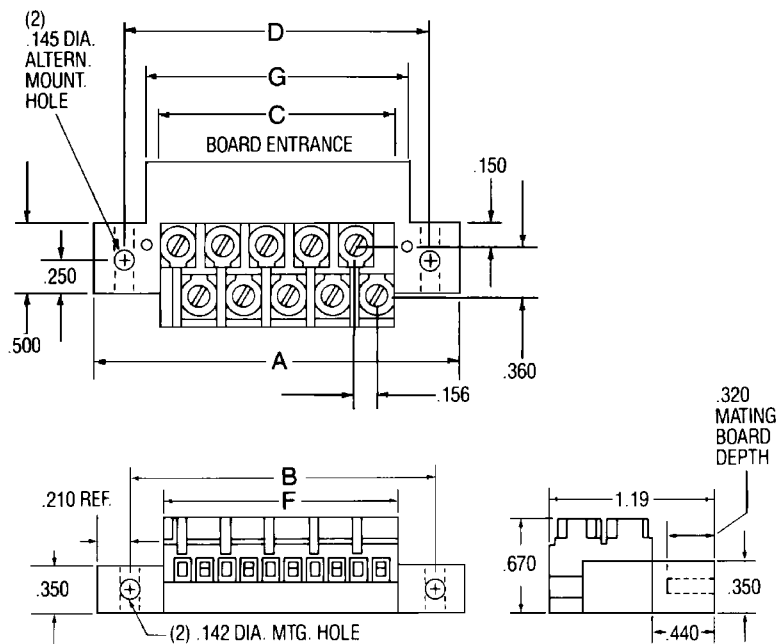
PITCH (TERMINAL SPACING): .156"  
 SCREW SIZE: 6-32  
 MOUNTING SCREW SIZE: #6  
 WIRE STRIP LENGTH: .66"  
 RECOMMENDED TIGHTENING TORQUE: 5-8 in.-lbs.  
 RECOMMENDED SCREWDRIVERS: Xcelite R184, Sears Craftsman 41429, Stanley 1016  
 BOARD INSERTION FORCE (TYP.) PER CKT.: 5 oz. (140g)  
 BOARD SEPARATION FORCE (TYP.) PER CKT.: 1.5 oz. (42g)  
 DURABILITY: Passes MIL-C-21097: 500 cycles

**ELECTRICAL PROPERTIES**

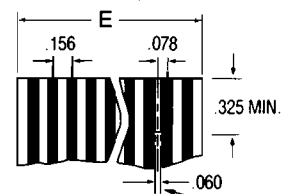
MAXIMUM CURRENT: 10A  
 OPERATING VOLTAGE: 250V  
 WIRE RANGE: #16-26 AWG  
 DIELECTRIC WITHSTAND: 2000V  
 INSULATION RESISTANCE: 10<sup>11</sup> ohms  
 CONTACT RESISTANCE: 10 milliohms

**ENVIRONMENTAL PROPERTIES**

OPERATING TEMPERATURE RANGE:  
 -65°C to +140°C  
 (-85°F to +284°F)



**Recommended  
PC Board Layout**



**POLARIZING KEY NOTCH**  
 Location in PC board per customer requirement. Order Polarizing Key Catalog No. PC19.

\*NOTE: .062" PC Board thickness.  
 .156" contact centerline spacing for single & double sided boards.

**Ordering Information**

CATALOG #	NO. OF CIRCUITS	A	B&D	C	E	F	G
PCB3S10S	10	2.59	2.16	1.73	1.71	1.65	1.85
PCB3S15S	15	3.37	2.95	2.51	2.50	2.43	2.64
PCB3S18S	18	3.84	3.41	2.98	2.97	2.90	3.11
PCB3S22S	22	4.47	4.04	3.60	3.59	3.54	3.73

\*NOTE: For optional Gold-over-Nickel plating on contacts (instead of standard bright tin), change the letter "S" of the catalog number to "A."



**0.156" PITCH  
PCB3D SERIES**

**PHYSICAL PROPERTIES**

**Housing**

HOUSING MATERIAL: Polyester  
 FLAMMABILITY: UL94V-0  
 COLOR: Black

**Terminal**

TUBULAR CONTACT: Brass  
 PC CONTACT: Phosphor Bronze  
 SCREW: Steel with Zinc + Chromate plating  
 CLAMP: Brass

**Mechanical**

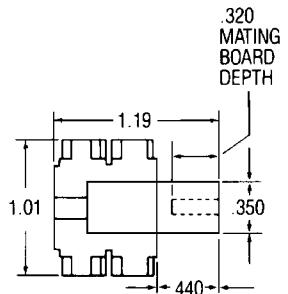
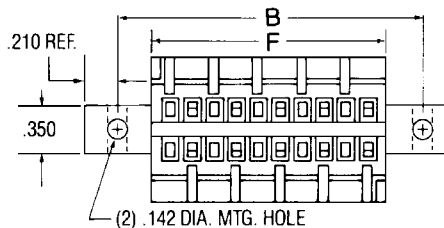
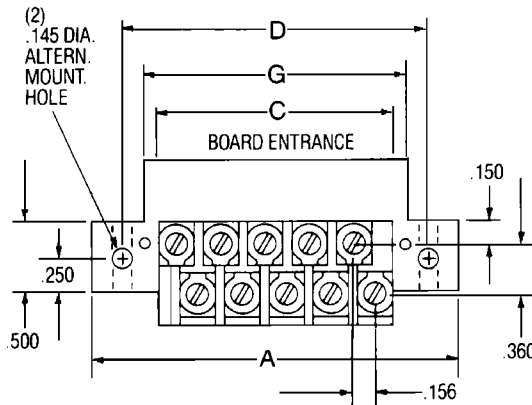
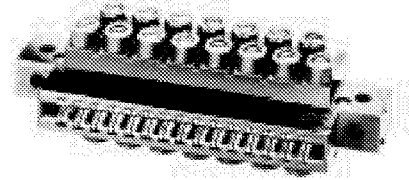
PITCH (TERMINAL SPACING): .156"  
 SCREW SIZE: 6-32  
 MOUNTING SCREW SIZE: #6  
 WIRE STRIP LENGTH: .66"  
 RECOMMENDED TIGHTENING TORQUE: 5-8 in.-lbs.  
 RECOMMENDED SCREWDRIVERS: Xcelite R184,  
 Sears Craftsman 41429, Stanley 1016  
 BOARD INSERTION FORCE (TYP.) PER CKT.: 5 oz.  
 (140g)  
 BOARD SEPARATION FORCE (TYP.) PER CKT.: 1.5 oz.  
 (42g)  
 DURABILITY: Passes MIL-C-21097: 500 cycles

**ELECTRICAL PROPERTIES**

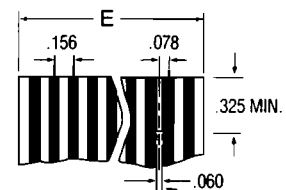
MAXIMUM CURRENT: 10A  
 OPERATING VOLTAGE: 250V  
 WIRE RANGE: #16-26 AWG  
 DIELECTRIC WITHSTAND: 2000V  
 INSULATION RESISTANCE: 10<sup>11</sup> ohms  
 CONTACT RESISTANCE: 10 milliohms

**ENVIRONMENTAL PROPERTIES**

OPERATING TEMPERATURE RANGE:  
 -65°C to +140°C  
 (-85°F to +284°F)



**Recommended  
PC Board Layout**



**POLARIZING KEY NOTCH**  
 Location in PC board per customer requirement. Order Polarizing Key Catalog No. PC19.

\*NOTE: .062" PC Board thickness.  
 .156" contact centerline spacing for single & double sided boards.

**Ordering Information**

CATALOG #	NO. OF CIRCUITS	A	B3D	C	E	F	G
PCB3D20S	20	2.59	2.16	1.73	1.71	1.65	1.85
PCB3D30S	30	3.37	2.95	2.51	2.50	2.43	2.64
PCB3D36S	36	3.84	3.41	2.98	2.97	2.90	3.11
PCB3D44S	44	4.47	4.04	3.60	3.59	3.54	3.73

\*NOTE: For optional Gold-over-Nickel plating on contacts (instead of standard bright tin), change the letter "S" of the catalog number to "A."

**0.156" PITCH  
PCB5B SERIES**

**PHYSICAL PROPERTIES**

**Housing**

HOUSING MATERIAL: Polyester  
 FLAMMABILITY: UL94V-0  
 COLOR: Black

**Terminal**

TUBULAR CONTACT: Brass  
 PC CONTACT: Phosphor Bronze  
 SCREW: Steel with Zinc + Chromate plating  
 CLAMP: Brass

**Mechanical**

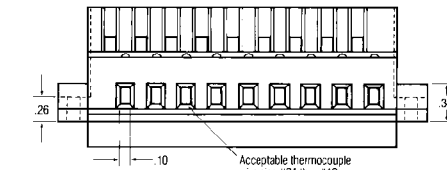
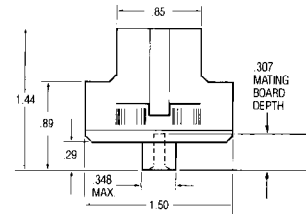
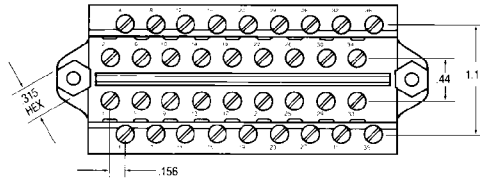
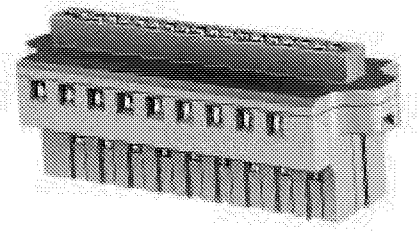
PITCH (TERMINAL SPACING): .156"  
 SCREW SIZE: 6-32  
 MOUNTING SCREW SIZE: #6  
 WIRE STRIP LENGTH: .25"  
 RECOMMENDED TIGHTENING TORQUE: 5-8 in.-lbs.  
 RECOMMENDED SCREWDRIVERS: Xcelite R184,  
 Sears Craftsman 41429, Stanley 1016  
 BOARD INSERTION FORCE (TYP.) PER CKT.: 7.6 oz.  
 (215g)  
 BOARD SEPARATION FORCE (TYP.) PER CKT.: 1.2 oz.  
 (35g)  
 DURABILITY: Passes MIL-C-21097: 500 cycles

**ELECTRICAL PROPERTIES**

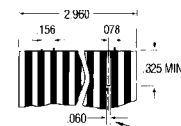
MAXIMUM CURRENT: 5A  
 OPERATING VOLTAGE: 250V  
 WIRE RANGE: #12 Stranded Only  
 DIELECTRIC WITHSTAND: 1500V  
 INSULATION RESISTANCE: 10<sup>11</sup> ohms  
 CONTACT RESISTANCE: 10 milliohms

**ENVIRONMENTAL PROPERTIES**

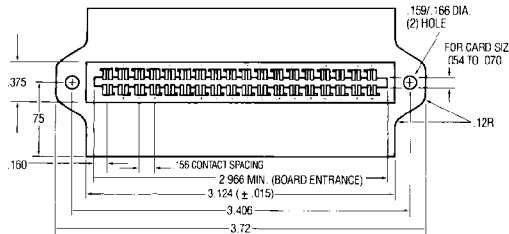
OPERATING TEMPERATURE RANGE:  
 -65°C to +140°C  
 (-85°F to +284°F)



**Recommended  
PC Board Layout**



POLARIZING KEY NOTCH  
 Location in PC board per customer  
 requirement. Order Polarizing Key  
 Catalog No. PC19



**Ordering Information**

CATALOG #	DESCRIPTION
PCB5B36A	Standard
PCB5B36AT	Temperature Stabilized Contacts

**0.200" PITCH  
INSULATION DISPLACEMENT  
SERIES PCB7A**

**PHYSICAL PROPERTIES**

**Housing**

HOUSING MATERIAL: Polypropylene  
FLAMMABILITY: UL94V-2  
COLOR: Black

**Terminal**

TUBULAR CONTACT:  
PC CONTACT: Phosphor Bronze with Bright Tin or Gold over Nickel plating  
SCREW:  
CLAMP:

**Mechanical**

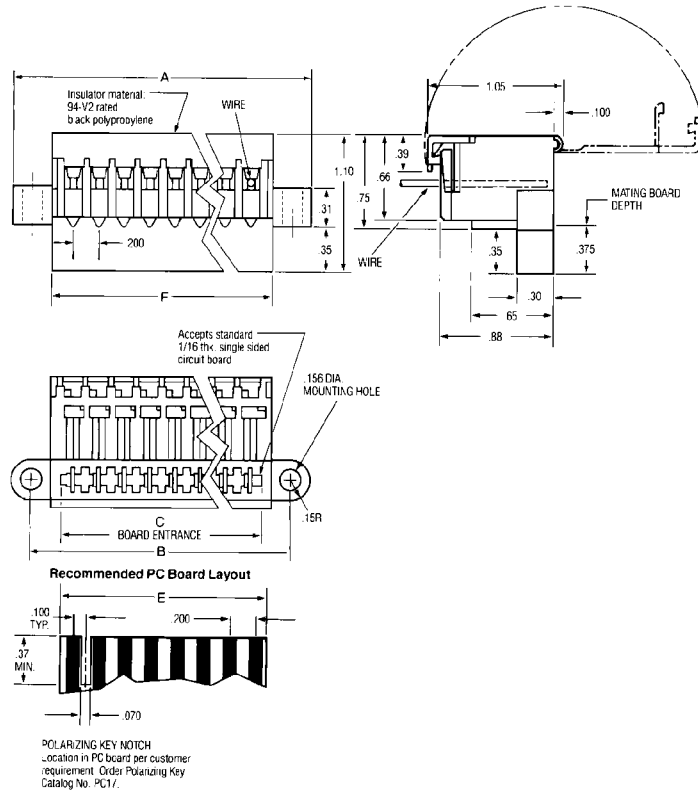
PITCH (TERMINAL SPACING): .200"  
MOUNTING SCREW SIZE: #6  
WIRE STRIP LENGTH: DO NOT STRIP  
RECOMMENDED TIGHTENING TORQUE:  
RECOMMENDED SCREWDRIVERS: Special Hand Tool Catalog No. PCHT7  
BOARD INSERTION FORCE (TYP.) PER CKT.: 6 oz. (170g)  
BOARD SEPARATION FORCE (TYP.) PER CKT.: 2 oz. (57g)  
DURABILITY: Passes MIL-C-21097: 500 cycles

**ELECTRICAL PROPERTIES**

MAXIMUM CURRENT: 7A  
OPERATING VOLTAGE: 250V  
WIRE RANGE: #14-22 AWG  
DIELECTRIC WITHSTAND: 3200V  
INSULATION RESISTANCE: 10<sup>11</sup> ohms  
CONTACT RESISTANCE: 2.2 milliohms

**ENVIRONMENTAL PROPERTIES**

OPERATING TEMPERATURE RANGE:  
-65°C to +105°C  
(-85°F to +221°F)



**Ordering Information**

CATALOG # (SPECIFY X)	NO. OF CIRCUITS	A	B	C	E	F
PCB7A06SX	06	1.93	1.63	1.180	1.160	1.32
PCB7A08SX	08	2.33	2.03	1.580	1.560	1.72
PCB7A10SX	10	2.73	2.43	1.980	1.960	2.12
PCB7A12SX	12	3.13	2.83	2.380	2.360	2.52
PCB7A14SX	14	3.53	3.23	2.780	2.760	2.92
PCB7A16SX	16	3.93	3.63	3.180	3.160	3.32
PCB7A18SX	18	4.33	4.03	3.580	3.560	3.72
PCB7A20SX	20	4.73	4.43	3.980	3.960	4.12
PCB7A22SX	22	5.13	5.23	4.780	4.760	4.52
PCB7A24SX	24	5.53	5.23	4.780	4.760	4.92
PCB7A26SX	26	5.93	5.63	5.180	5.160	5.32

X	WIRE SIZE (SOLID OR STRANDED)
1	#20 & #22 AWG
2	#18 & #16 AWG
3	#14 AWG

\*NOTE: For optional Gold-over-Nickel plating on contacts (instead of standard bright tin), change the letter "S" of the catalog number to "A."



**BUCHANAN.**



### 0.375" PITCH SERIES PSB

#### PHYSICAL PROPERTIES

##### Housing

HOUSING MATERIAL: Noryl  
 COLOR: Black  
 FLAMMABILITY: UL94V-0

##### Terminal

PC CONTACT: Phosphor Bronze with Bright Tin or Gold over Nickel plating  
 SCREW CONTACT: Phosphor Bronze with Bright Tin or Gold over Nickel plating  
 SCREW: steel with Zinc + Chromate plating  
 CLAMP: Brass

##### Mechanical

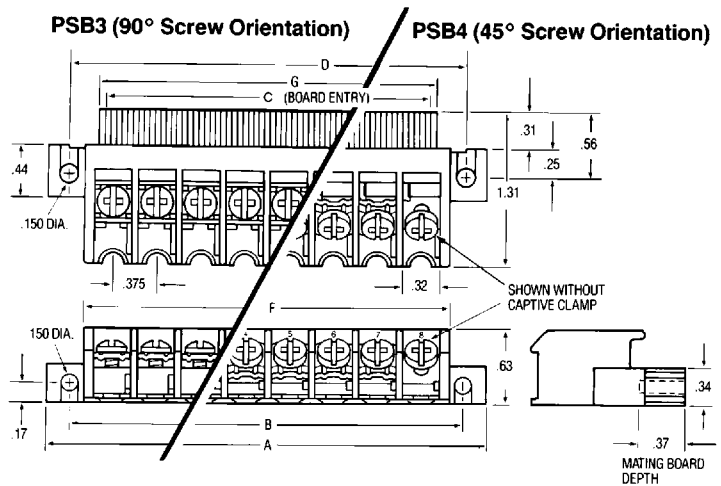
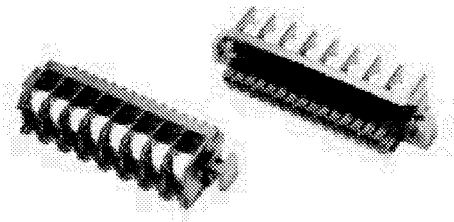
PITCH (TERMINAL SPACING): .375"  
 SCREW SIZE: 6-32  
 MOUNTING SCREW: #6  
 WIRE STRIP LENGTH: .31"  
 WIRE LUG WIDTH: .320" (8,1mm)  
 RECOMMENDED TIGHTENING TORQUE: 9 in.-lbs.  
 RECOMMENDED SCREWDRIVERS: Stanley 1006-4, Sears Craftsman 41581, Any #2 Phillips-Head  
 BOARD INSPECTION FORCE (TYP.) PER CKT.: 6 oz. (170g)  
 BOARD SEPARATION FORCE (TYP.) PER CKT.: 2 oz. (57g)  
 DURABILITY: Passes MIL-C-21097: 500 cycles

#### ELECTRICAL PROPERTIES

MAXIMUM CURRENT: 10A  
 OPERATING VOLTAGE: 300V  
 WIRE RANGE: #12-26 AWG  
 DIELECTRIC WITHSTAND: 3000V  
 INSULATION RESISTANCE: 10<sup>11</sup> ohms  
 CONTACT RESISTANCE: 5 milliohms

#### ENVIRONMENTAL PROPERTIES

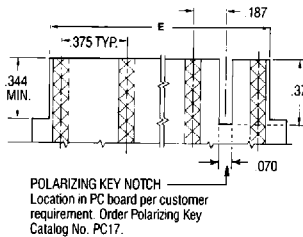
OPERATING TEMPERATURE RANGE:  
 -60°C to +95°C  
 (-76°F to +203°F)



#### DIMENSIONS

NO. CIRCUITS	A IN.	B&D IN.	C IN.	E IN.	F IN.	G IN.
06	3.00	2.625	2.000	1.990	2.36	2.16
08	3.75	3.375	2.750	2.740	3.11	2.91
10	4.50	4.125	3.500	3.490	3.86	3.66
12	5.25	4.875	4.250	4.240	4.61	4.41
14	6.00	5.625	5.000	4.990	5.36	5.16
16	6.75	6.375	5.750	5.740	6.11	5.91
18	7.50	7.125	6.500	6.490	6.86	6.66
20	8.25	7.875	7.250	7.235	7.61	7.41
22	9.00	8.625	8.000	7.985	8.36	8.16
24	9.75	9.375	8.750	8.735	9.11	8.91
26	10.50	10.125	9.500	9.485	9.86	9.66
28	11.25	10.875	10.250	10.235	10.61	10.41

#### Recommended PC Board Layout



**0.375" PITCH  
SERIES PSB**

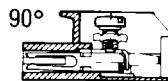
**ORDERING INFORMATION**

**PSB 3 K B 08 S NN NN N N**

**PSB Printed Circuit Board Connector**

**Terminal Screw Orientation**

3 = 90°  
4 = 45°



**Contact Spacing**

K = .375 (3/8)



**Terminal Screw Type**

- B** = #6 Phil-slot binding head screw, bright zinc and chromate plated.
- C** = #6 Phil-slot steel screw and clamp, bright zinc and chromate plated – Do not order in combination with any other top hardware.
- D** = #6 Phil-slot copper alloy screw and clamp, nickel plated – Do not order in combination with any other top hardware.

**Number of Circuits**

06 through 28 (even numbers only)

**Terminal Plating**

(not screw)

- A** = Gold
- S** = Bright Tin

**Top Hardware Options**

NN = No optional hardware

**QUICK CONNECT BLADES**

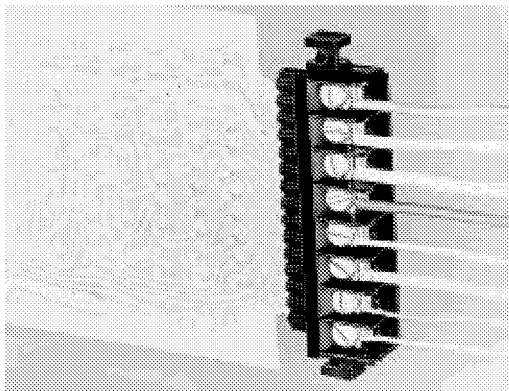
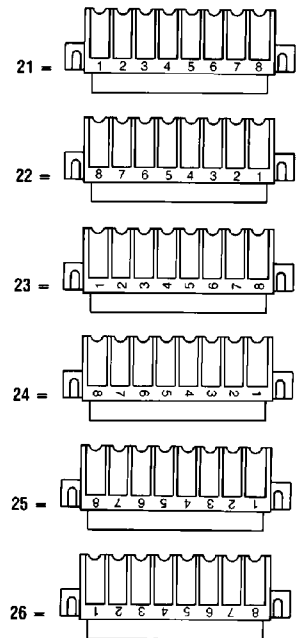
.250 wide x.032 thick	.187 wide x.020 thick	
21	41=	✓ *
22	42=	✓ *
23	43=	✓ **
24	44=	✓
25	45=	✓
29	49=	✓ **
30	50=	✓ **
31	51=	✓ **
34	54=	✓ *
35	55=	✓
36	56=	✓ *

\* PSB4K only  
\*\* PSB3K only

**80** = Single Sided Solder Tab (PSB3K only)

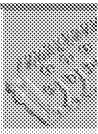
**Circuit Identification Option**

NN = No circuit identification

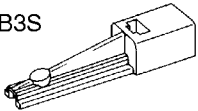

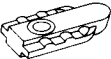







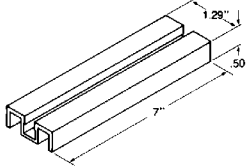
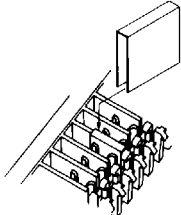
**Material**  
N = Noryl

**Color**  
N = Black



# ACCESSORIES FOR SERIES PCB

Description	Catalog Number
<b>Add-on Card Guide</b> (Nylon) for PCB2B, PCB3D and PCB3S	 <b>PC18</b>
<b>Polarizing Keys</b> (Nylon) for PCB1A, 1B, 2B, 3A, 7A	 <b>PC17</b>
for PCB3D, 3S, 5B,	 <b>PC19</b>
<b>Two-Circuit Jumper</b> for PCB1B, PCB2B and PCB5B	 <b>PCBJ1</b>
for PCB1A and PCB3A	 <b>PCBJ2</b>
for PCB3D and PCB3S	 <b>PCBJ3</b>

Description	Catalog Number
<b>Hand Tool</b> for insertion of individual wires for PCB7A:	 <b>PCHT7</b>
<b>Mass-Termination Press</b> installs all wires in any size connector with one stroke	 <b>PCMT7</b>
<b>Rigid PVC Stand</b> for use with Hand Insertion Tool	 <b>PC2-BU</b>
<b>Inter-Contact Jumper</b> for load splitting between adjacent terminals and increased current carrying capacity (factory installed only)	 <b>PCBJ7</b>

# ACCESSORIES FOR SERIES PSB

**Description** **Catalog Number**

**Polarizing Key**



**PC17**

CHUCK CONNECT BLADES	.250 .187		
	WIDE X	WIDE X	
	.032 THICK	.020 THICK	
45°, Two-sided (PSB4K only)	<b>QC21</b>	<b>QC42</b>	
90°, Two-sided (PSB4K only)	<b>QC22</b>	<b>QC42</b>	
Flat, One-sided (PSB3K only)	<b>QC23</b>	<b>QC42</b>	
45°, Single-Sided	<b>QC24</b>	<b>QC44</b>	
90°, Single-Sided	<b>QC25</b>	<b>QC45</b>	

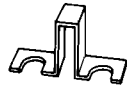
**Solder Tab (PSB3K)**



**ST80**

**Jumpers**

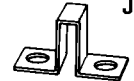
Two-Circuit Over the Barrier, Spade Type Jumper



**J74**

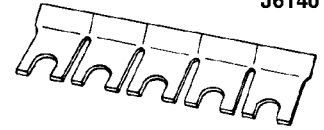
**Description**

**Two-Circuit, Over the Barrier, Ring Tongue Jumper**



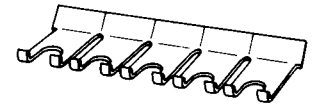
**Catalog Number**  
**J75**

**Around the Barrier\* Spade Jumper**  
40 ckts snap apart to desired lengths



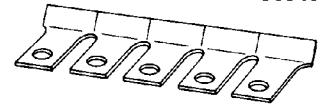
**J6140**

**Around the Barrier\* Flanged Spade Jumper**  
40 ckts, snap apart to desired lengths.



**J6240**

**Around the Barrier\* Ring Tongue Jumper**  
40 ckts, snap apart to desired lengths

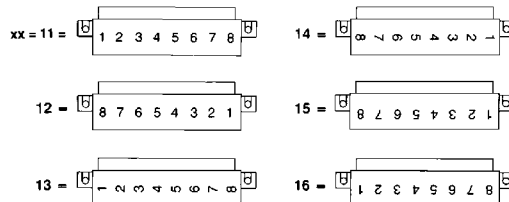
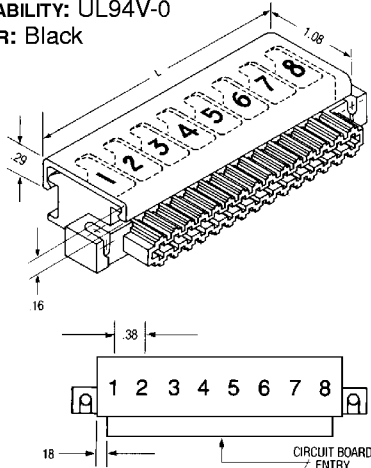


**J6340**

*\*NOTE: Jumper extends 0.54 horizontally from center of screw.*

**Covers for Series PSB**

**HOUSING MATERIAL:** PVC (50° temp. index)  
**FLAMABILITY:** UL94V-0  
**COLOR:** Black



**Ordering Information**

CATALOG #	NO OF CIRCUITS	L IN.
PSB3KCC06	06	2.41
PSB3KCC08	08	3.16
PSB3KCC10	10	3.91
PSB3KCC12	12	4.66
PSB3KCC14	14	5.41
PSB3KCC16	16	6.16
PSB3KCC18	18	6.91
PSB3KCC20	20	7.66
PSB3KCC22	22	8.41
PSB3KCC24	24	9.16
PSB3KCC26	26	9.91
PSB3KCC28	28	10.66

**\*CIRCUIT IDENTIFICATION OPTION**  
If marking is desired, select the Code Number listed at left for the appropriate configuration and add that number to the Catalog Number. Characters are 1/8 high.

**0.150" PITCH  
FACE CONNECTOR**

**PHYSICAL PROPERTIES**

**Housing:**

HOUSING MATERIAL: Glass filled polyester

FLAMMABILITY: UL94V-0

COLOR: black

**Terminal**

CONTACT: Copper alloy, selective gold over nickel

SCREW: #3-48 steel, zinc plating with clear chromate coating

CAM: steel alloy, zinc plating with clear chromate coating

CONTACT: Copper alloy, selective gold over nickel

**Mechanical**

PITCH (TERMINAL SPACING): .150"

SCREWS: #3-48 steel, zinc plating with clear chromate coating

WIRE RANGE: 14-22 AWG (solid or stranded)

RECOMMENDED TIGHTENING TORQUE: 5 lb. in.

**ELECTRICAL PROPERTIES**

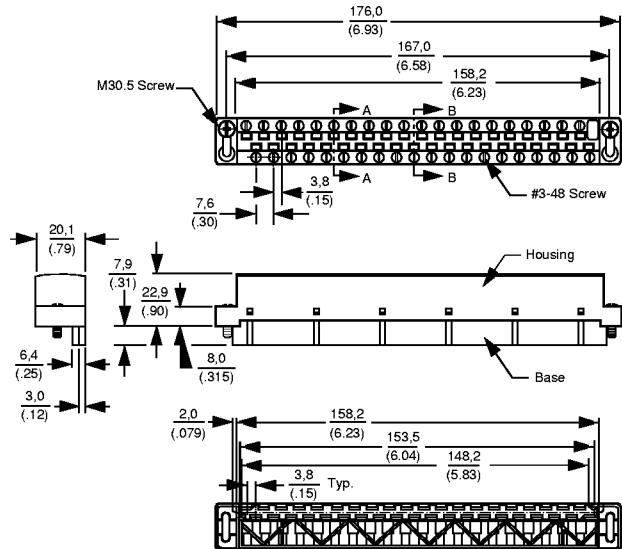
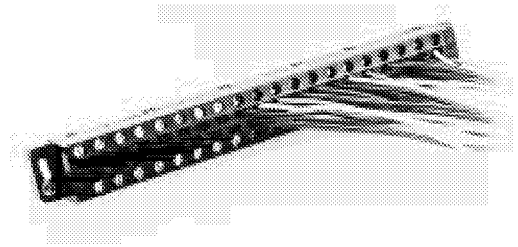
MAXIMUM CURRENT: 15A

OPERATING VOLTAGE: 300V

DIELECTRIC WITHSTAND: Tested to 1600V

**ENVIRONMENTAL PROPERTIES**

MAX. OPERATING TEMPERATURE: 130°C



**Ordering Information**

CATALOG #	DESCRIPTION
FACE-40	40 circuit connector

